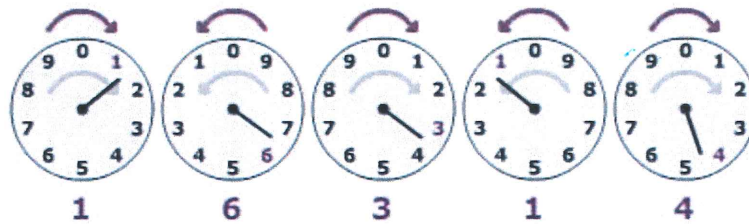


READING YOUR ELECTRIC METER

Dial Meters

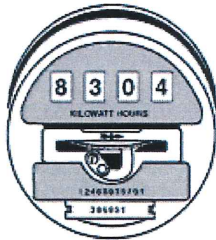
Reading your own dial electric meter is easy. Simply read each dial like a clock from left to right, rounding down. Some of the dials run counterclockwise, but all you have to remember is that rounding down means you record the smaller of the two numbers closest to the pointer.



Reading left to right on the meter illustration, the first number is 1, the second number is 6, the third number is 3, the fourth number is 1 and the fifth number is 4.

This means your electric meter reading is 16314.

Digital Meters



The digital meter displays numbers in four or five windows. If you have this meter, you simply record the numbers.

This means your digital electric meter reading is 8304.

Keep in mind that when the PUD Meter Reader reads your meter, they do NOT set it back to zero. Therefore the dials keep turning until the next time the meter is read. **By subtracting yesterday's reading from today's reading, you can get a feel for how much energy (kilowatt hours) you use each day.**

Lewis County PUD Meter Readers use hand-held computers to record the meter reading. The computer checks to see if the reading is about the same as the one the previous month. If it is quite a bit lower or higher, the meter reader is asked to re-read the dials to make sure the reading is correct. This helps insure your bill is accurate each and every month!